



NUI Galway
OÉ Gaillimh

Career Development Centre

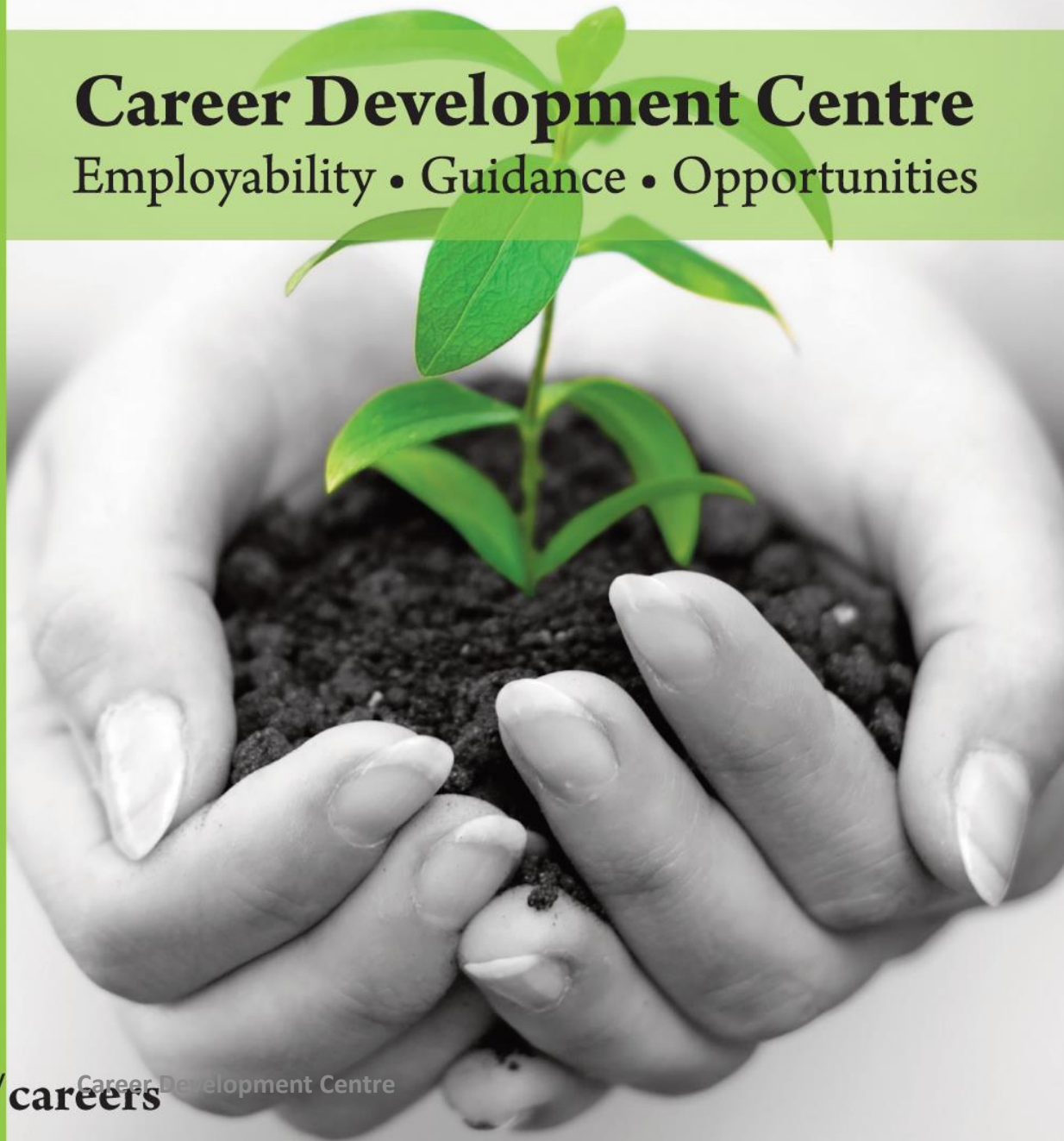
Employability • Guidance • Opportunities

TRANSITION TO EMPLOYMENT PROGRAMME

Ananda Geluk
Career Development
Adviser



www.nuigalway.ie/careers



Career Development Centre

- Motivation
- Overview of programme
- Outcomes
- Learning



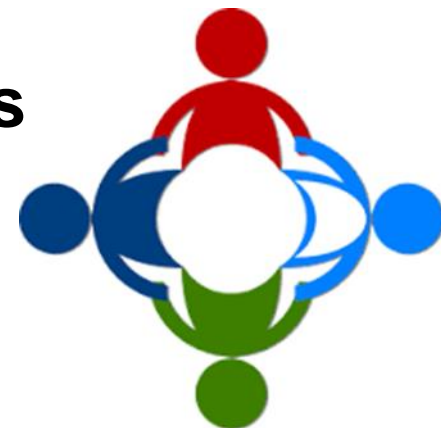
At the **Career Development Centre** our aim is to provide students of NUI Galway...

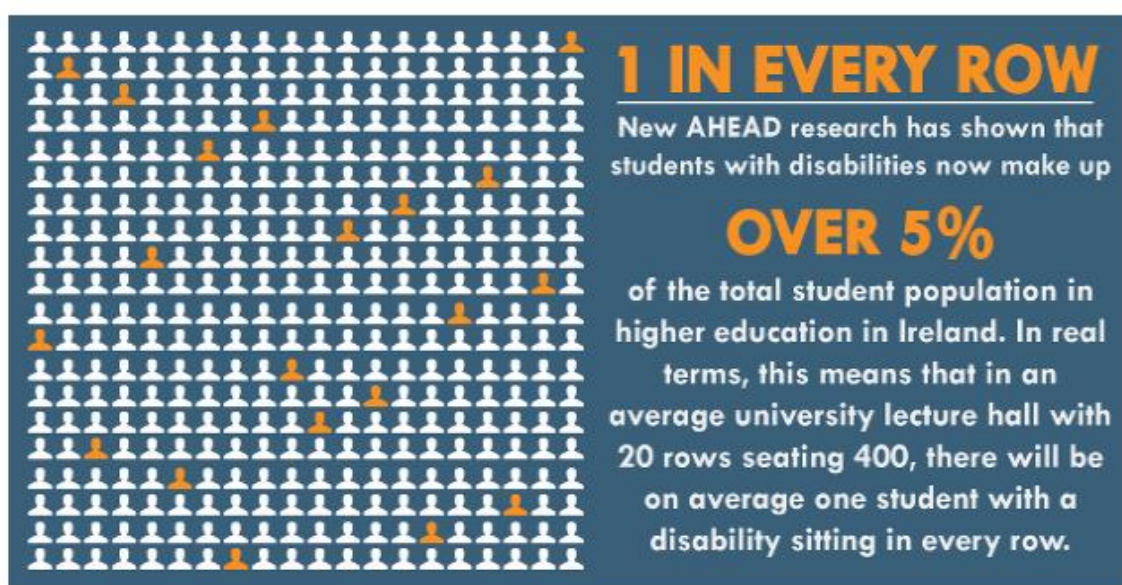
“...with a quality career guidance and information service focused on facilitating and empowering you to manage your own career development and make effective career transitions.”

Employability

Guidance

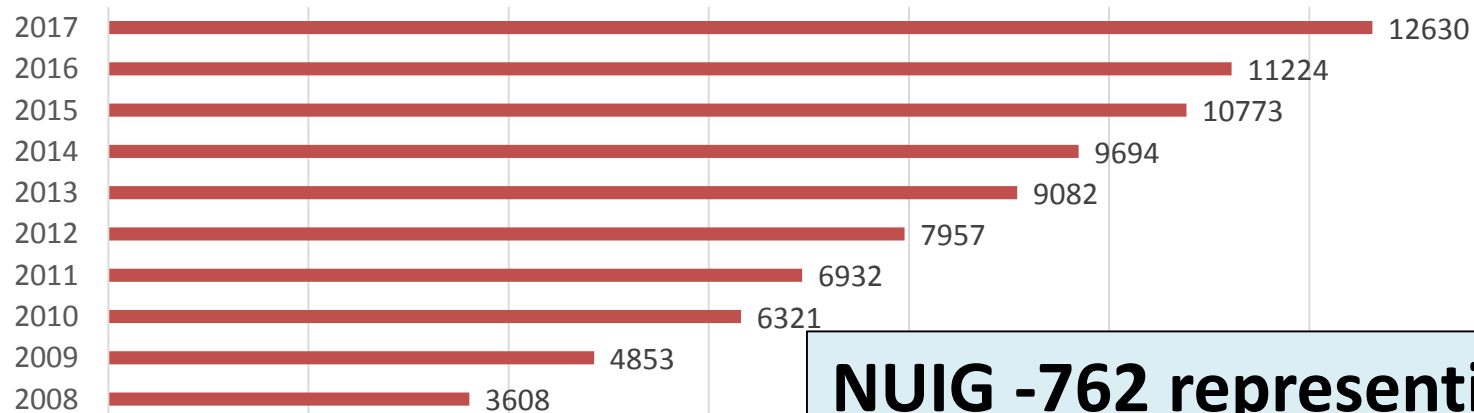
Opportunities





Association for Higher Education Access & Disability

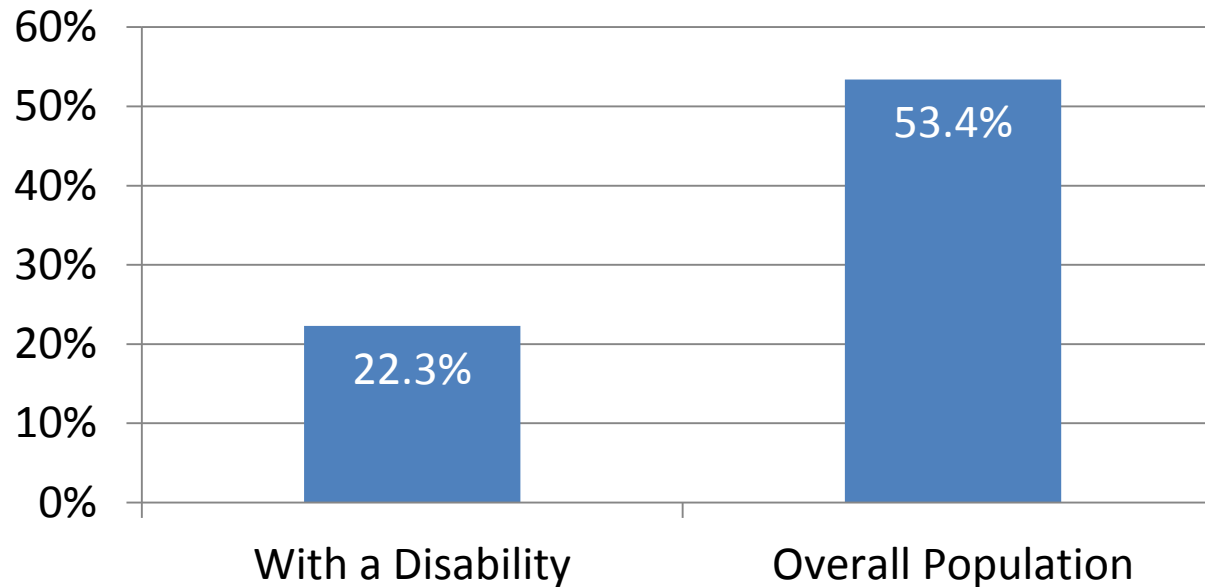
Number of Students with Disabilities



NUIG -762 representing 4.4%



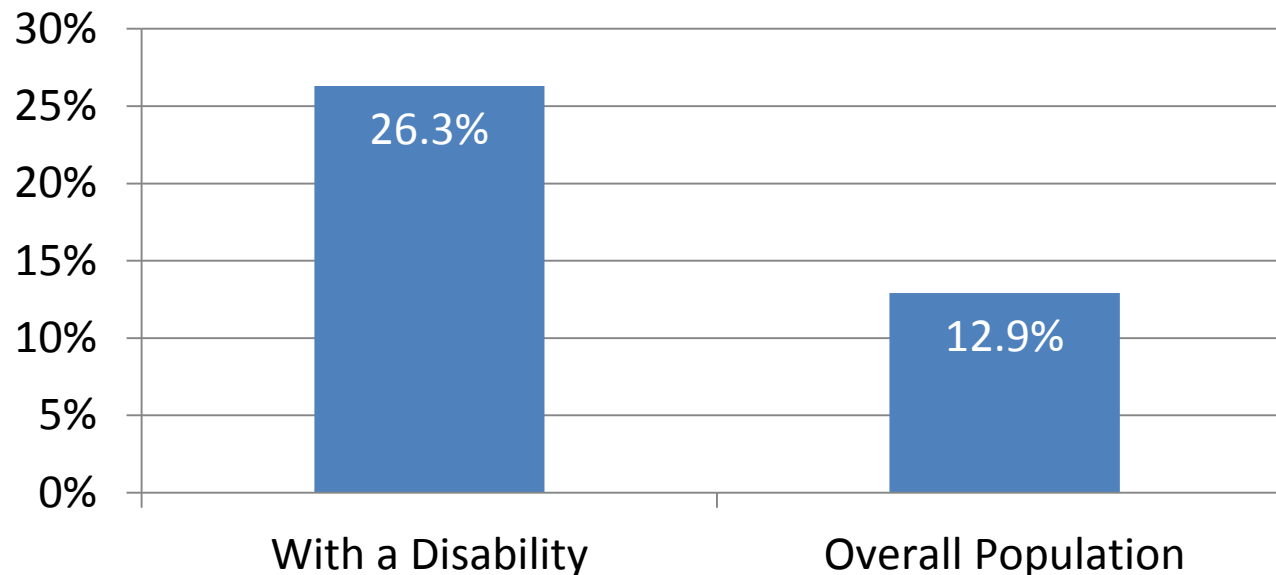
Employment Rates (aged 15+)



CSO, Census 2016 Profile 9 – Health, Disability and Carers



Unemployment Rates (aged 15+)



CSO, Census 2016 Profile 9 – Health, Disability and Carers



- Collaboration with Disability Support Services, Student Counselling and AHEAD
- Universal Design for Learning – from AHEAD Start, online course for educators
- Agile methodology – inspect and adapt (learn as you go!)
- Engage employers



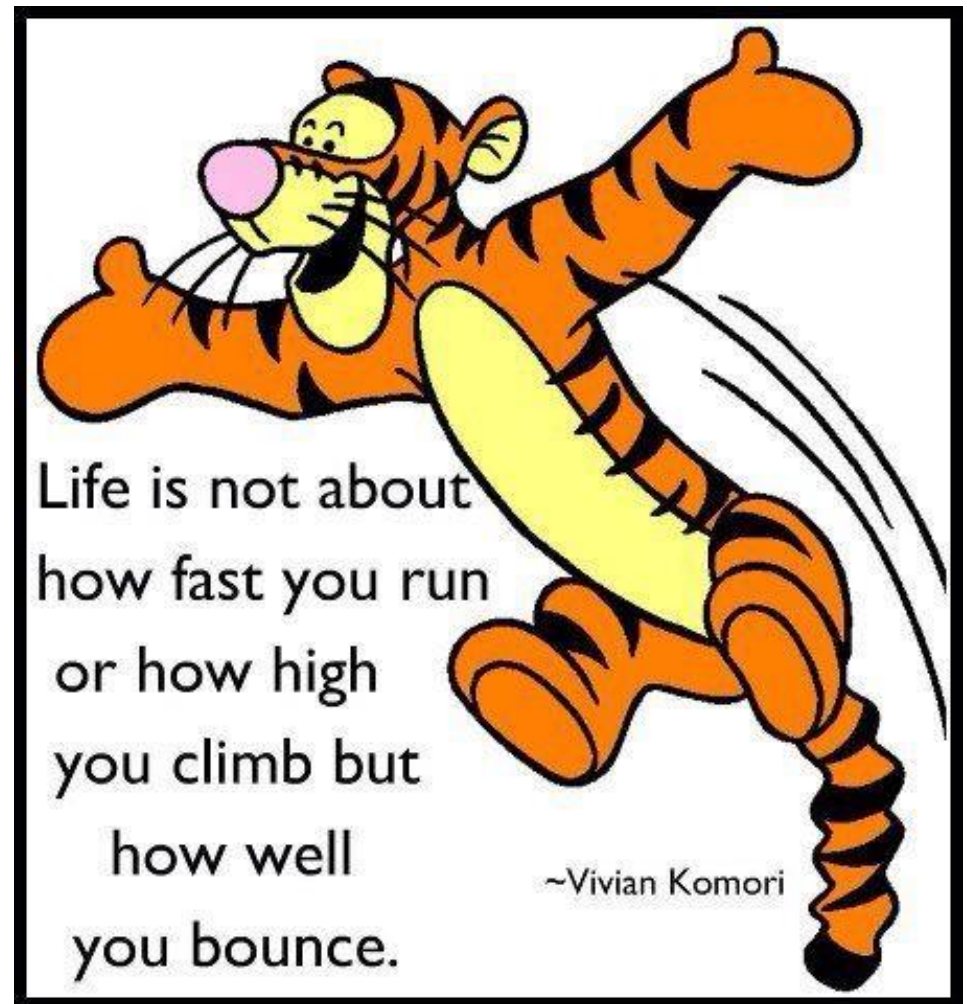
- 12 in total
- Core group of regular attendees
- Wide range of disabilities and mental health conditions represented



Series of workshops

- Introductory Session
- Disclosure Workshop with AHEAD
- Employer Panel
- CV Workshop
- Interview Skills Workshop
- Wrap up and Reflect
- 1-1 Support







who me?



© 2010 Mark the Wolf
www.markthewolf.co.uk



Strengths...

Skills...

Abilities...



What you are good at



What is Disclosure?

- Informing someone about your disability, specific learning difficulty or mental health difficulty.





Positive increases in students' level of career readiness

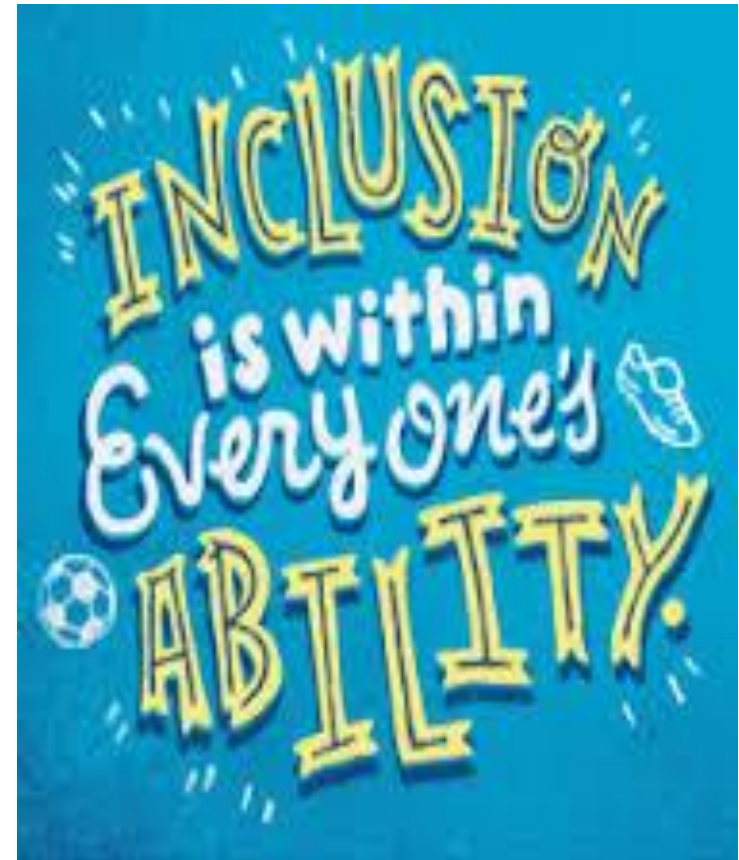
- **30%** in 'skills awareness' in relation to chosen career
- **20%** increase in readiness to declaring career goals
- **16%** increased confidence to disclosing disability
- Two participants secured employment as a result of advice gained on the programme.



EmployAbility Programme - Self-reflection survey results Beginning and end of programme



- The role of AHEAD and how it supports graduates with disability
 - Disclosure, WAM
- Potential barriers – ensure to be inclusive when designing workshops
- Practical strategies for accessibility and accommodations
- Awareness of disability legislation and how it relates to students in 3rd level and employment



“ Many people with disabilities still find it hard to get a job, but it is encouraging to see that companies like Google and the ESB value diversity and are passionate about providing equal chances for everyone.”

“ What a difference! From presenting myself at the careers office, full of self doubt and hopelessness to walking away after five workshop sessions with a spring in my step.”

“ The transition to employment workshops gave me reason to hope that a successful career might be within my grasp, even as someone who struggles with their mental health.”





